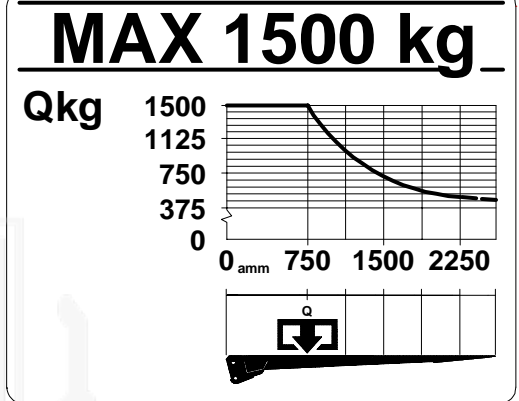
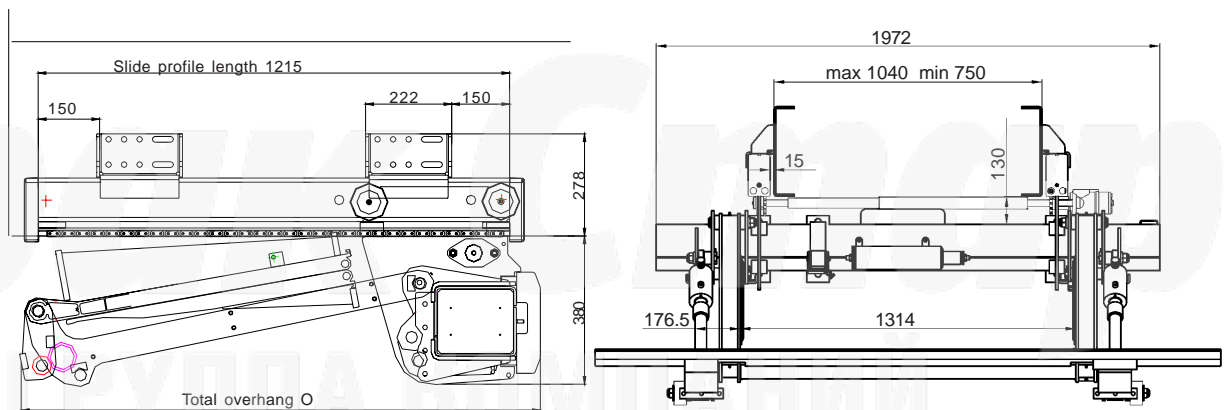
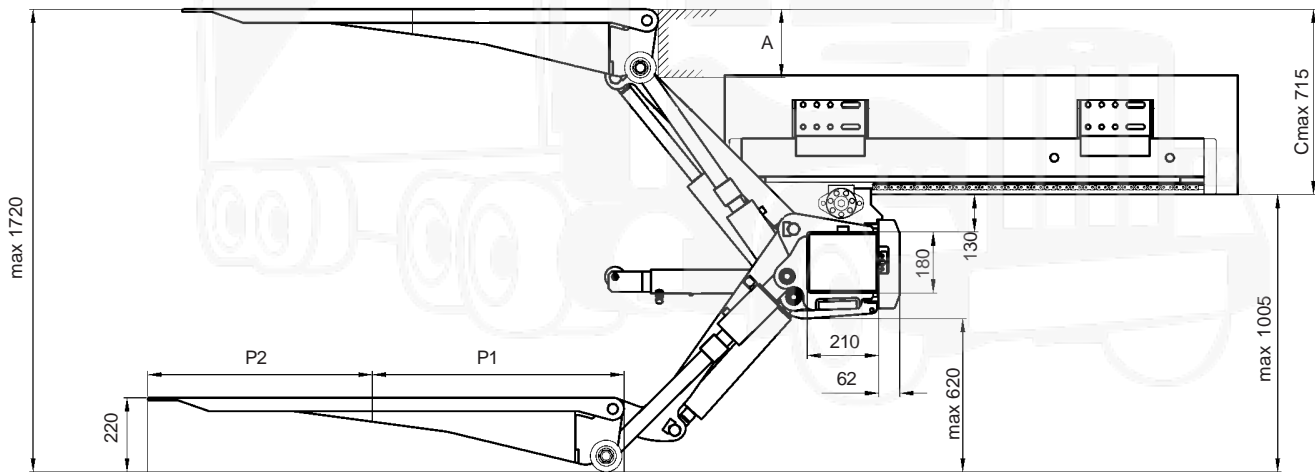


(160 bar)	12 volt	24 volt
Pump - Motor Unit	245A	125A
Magnet (hydraulic unit)	4,2A	2,1A
Magnet (electric safety valve)	1,5A	0,75A
Solenoid	1,5A	0,85A
Cable area:		
Control cable	1,5mm <sup>2</sup>	1,5mm <sup>2</sup>
Main cable 0-8m	35mm <sup>2</sup>	35mm <sup>2</sup>
Main cable 8-15m	50mm <sup>2</sup>	35mm <sup>2</sup>
Main cable <15m	-	50mm <sup>2</sup>
Power source:		
Min. capacity	170Ah	180Ah
Min. voltage	9 Volt	18 Volt

Loading diagram



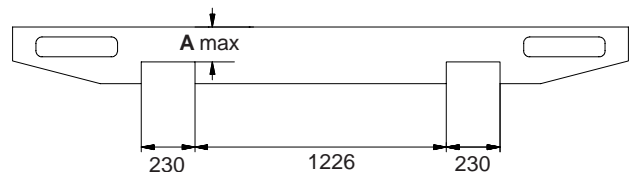
Installation dimensions (mm)



C	A
715	205
700	195
650	182
600	172
550	164
500	157
450	145
400	135
350	121
305	110

PML

P1	P2	O
882	764	1350



**Трак Стар**  
ГРУППА КОМПАНИЙ



**ZEPRO**

Телефон: +7 927 503 2024  
E-mail: ek225@truck-star.ru  
Сайт: www.truck-star.ru

2004-04-02